



PROXIMITY panel mount reader

Use with Switch2 or Net2

Designed for use in audio/video entry panels

Fits neatly behind a 40mm square aperture

40mm square is the industry standard size

Clear polycarbonate cover gives a neat finish

IP67 rated - suitable for external use

About

The panel mount reader is for use with Switch2 and Net2 systems. It is designed to fit into door entry panels. It can also be fitted into posts to control car park barriers. It fits behind a reader cut out of industry standard size.

Installation

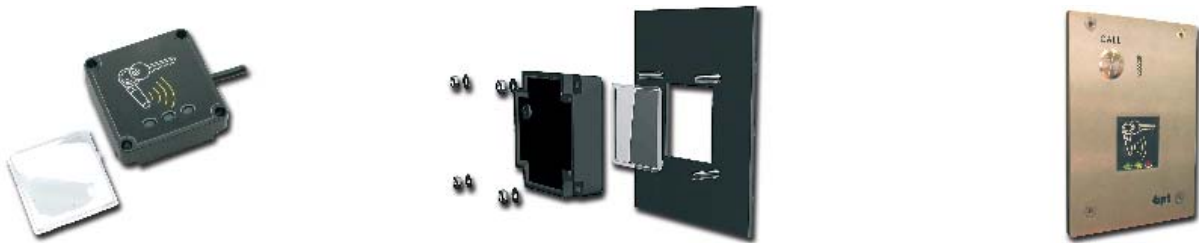
The reader is wired as shown on the control unit label. It is designed to fit over 4 posts fixed around a 40mm square aperture.

Web links

http://paxton.info/98	Specifications
http://paxton.info/81	Installation Instructions
http://paxton.info/78	3D Visual

Operation

A token is read by holding it within close proximity of the reader. Once a token has been read the control unit looks up the access permissions of that user. Access is then granted or denied as appropriate.



Sales code	Description	Retail price
390-135	PROXIMITY panel mount reader	£135.00